

There is  
a better way ...

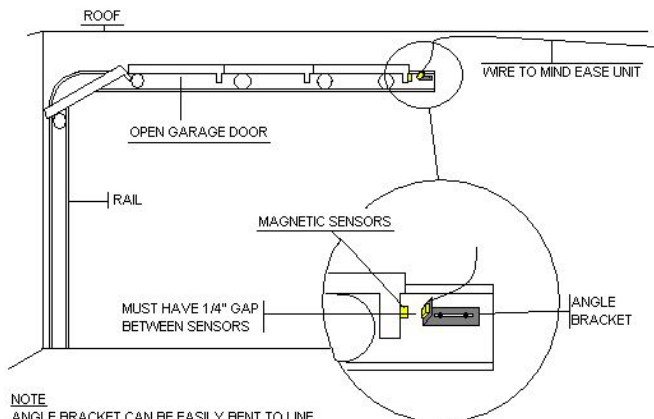


## USER GUIDE AND MOUNTING INSTRUCTIONS FOR MIND EASE GARAGE DOOR SYSTEMS LTD.

1. Before mounting the timer relay unit you must install the 9-volt battery. Remove the back of the unit by removing a single Phillips (\*) screw near the bottom of the unit. Put battery in and place in space provided. Replace back of unit. Make sure the on/off switch is in the off position.
2. Attach mounting bracket on wall using 2 enclosed 1" screws and plastic plugs. If using plastic plugs first drill pilot holes using 1/4" drill bit. Mounting hooks should be facing away from the wall, side with 2 hooks should be pointing up. Be sure to mount close enough to your existing garage door button for the 12" wire to connect to the Mind Ease Timer Relay Unit and your garage door button.
3. Place Mind Ease unit on wall mount. Remove the face of your existing garage door button. Plug 12" white wire into the white plug (on right) of top of Mind Ease unit. Attach the other end of wire (exposed) to the 2 wire terminals on your existing garage door button. It does **NOT** matter which wire you place on the terminal as long as each of the 2 wires is on separate terminals.
4. Replace garage door button face.
5. Attach metal angle bracket to end of garage door rail using nuts and bolts provided. Do not mount bracket in areas that will interfere with operation (movement) of garage door. This step may require 2 holes to be drilled in the rail to securely mount the angle bracket. This will allow you to adjust the bracket to match up to the magnetic sensor. **See diagrams 1a and 1b**

SECTIONAL GARAGE DOOR EXAMPLE MOUNTING INSTRUCTIONS

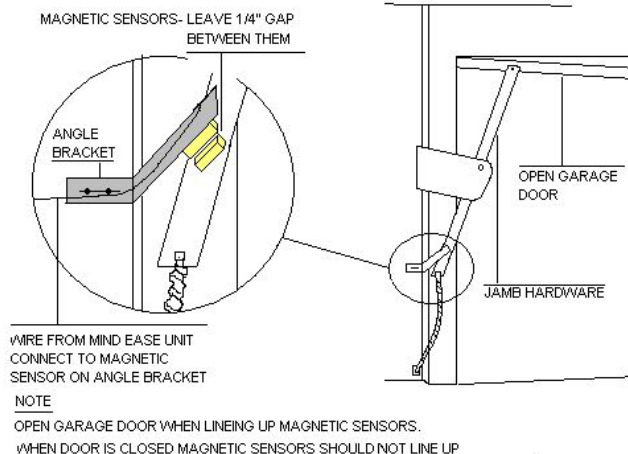
Diagram 1a



NOTE  
ANGLE BRACKET CAN BE EASILY BENT TO LINE  
UP MAGNETIC SENSORS

ONE-PIECE DOOR EXAMPLE MOUNTING INSTRUCTIONS

Diagram 1b

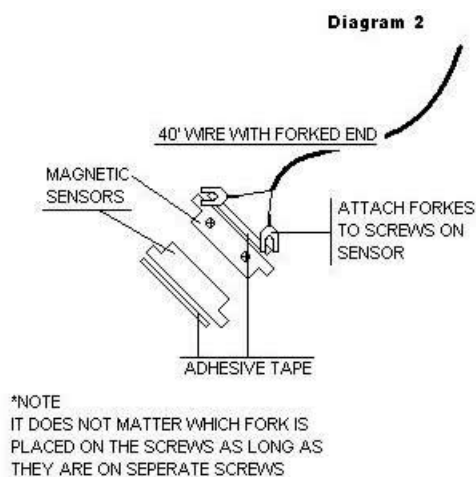




**There is  
a better way ...**



6. Attach the magnetic sensor with the 2 connection terminals to the metal angle bracket with dual sided adhesive tape. Sensor should be facing garage door. **See diagram 2.**



7. Open garage door fully. Attach other half of magnetic sensor to the lip of the garage door so that it lines up with the magnetic sensor attached to the angle bracket. Attach magnetic sensor with adhesive tape or if possible with screws provided.
8. Adjust angle bracket to leave a 1/4" gap between the 2 magnetic sensors. Tighten nuts.
9. Plug the black 40' wire into the black plug on top left of the Mind Ease Unit. Run wire up wall or along top of roof using wire clips provided. Attach end of wire (forked end) to magnetic sensor on angle bracket. Again it does **NOT** matter which wire is placed on either terminals as long as they are on separate terminals.
10. The Mind Ease Unit is now fully installed.
11. Close the garage door, set the time for 5 minutes and turn the unit on. Fully open the garage door. Wait and watch the unit "activate". There will be a 20 sec. audio warning prior to door closing. Installer must check garage door safety features to make sure they are working properly. eg; when unit activates if photo eye beam is broken the door should automatically reverse.

**Door must be in closed position when setting the timer. If timer is adjusted when door is open it will default to original time set.**

**\*Note:**

Power On Battery Check

If voltage drops less than 7.2V, beeper will beep every 1.5 seconds for 30 seconds. Unit will still be functional; this indicates it is time to change the battery.